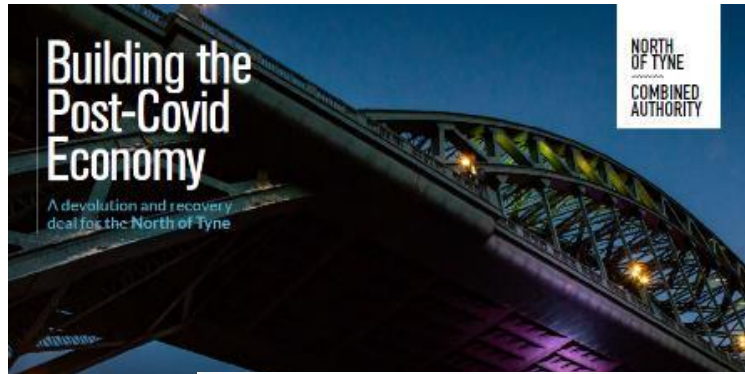


North of Tyne Combined Authority Regional Recovery & Devolution Nov 2021





1. The Context – recapping the context for our recovery work

2. Our Approach – how have we worked alongside regional partners?

3. Delivery – what is happening in the North of Tyne and North Tyneside?

The Context – as of 2019/20

- Immediate lockdown of society & economy creates a sharp shock to our economy
- Delicate balance between health protection and economic activity throughout
- Evolving central-local dynamics – eg tier system and uneven test, trace & isolate regime
- Furlough & grant/loans keep economy afloat, but serious sector & unemployment concerns
- Clear need for strong cross-regional collaboration and proactive support for biz, communities & places



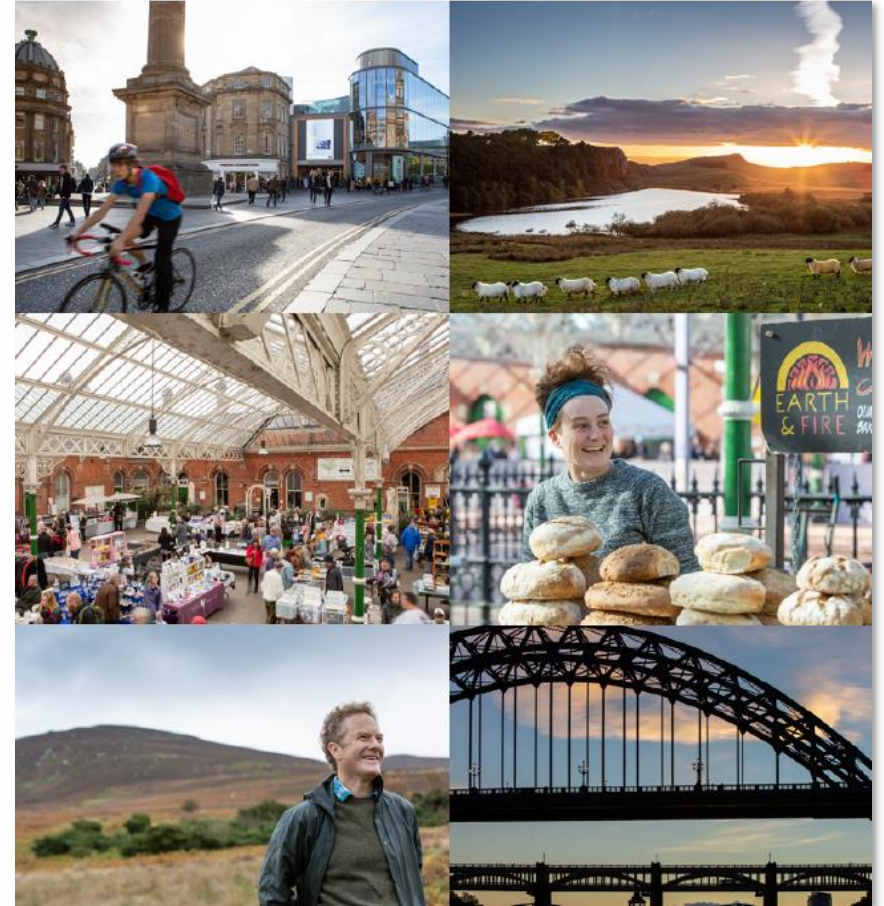
How have things changed since?

- Covid is a 'fact of life'... with various lockdowns and restrictions... and potentially more to come
- Economic picture is better than expected – less unemployment and a more positive macro picture
- But inequalities have entrenched, and big challenges remain for some business sectors and public services
- Two budgets and a CSR have produced a mixed picture for the regions – some successes, but recovery and 'levelling up' still a work in progress
- NTCA Cabinet proactive in delivery – allocating major investment and doubling down on skills & jobs



What have we done to support recovery?

- Played a full part in NTCA and LA7-wide recovery planning
- Co-authored NE-wide economic recovery and transport connectivity plans
- Brought together bold submissions to Govt with our LA colleagues – for CSR and devo
- Maintained delivery of our programmes – and brought forward specific £15m recovery package
- Accelerated skills, job-matching and DWP collaboration, in addition to AEB commissioning
- Supporting our LAs (and vice versa!)



- **Adult education, skills and inclusion** - £25m annual funding for adult skills, youth hubs & inclusion
- **Clean energy & 'green jobs'** – c£24m in Green New Deal Fund and clean energy/offshore infra & innovation from Blyth to Tyne
- **New homes & communities** – including £24m Brownfield Housing Fund, community hubs and high streets
- **Covid Response & Innovation** - £15m response and 'recovery innovation' funding delivered collaboratively... and early stage innovation at NICA, NICD, P&G etc
- **Culture, Creative & Tourism, Inward Investment, Biz Support** – including devolved C&C Recovery Fund, £10m IIF, £15m growth funds
- **Digital growth & connectivity** – £18m package of infra, jobs, business support & digital inclusion interventions (including upcoming 5G prog)
- **Corporate services that enable all of this quick progress!** – managing projects, buildings, finances, administration...and keeping us upright



Some examples of how this works in North Tyneside...

North Shields Masterplan & Sites

Verisure - Inward Investment at Quorum

Quay-side infrastructure at Swans

Innovation at P&G in Benton

Kit & connectivity for vulnerable kids

Support for Covid recovery in NT



...and major cross-regional programmes...e.g.

North Bank of the Tyne

Northumberland Line

5G & Digital Connectivity

‘Green New Deal’ Fund

Child Poverty Prevention

...all built through collaborative policy & delivery...

North of Tyne area – Map

